



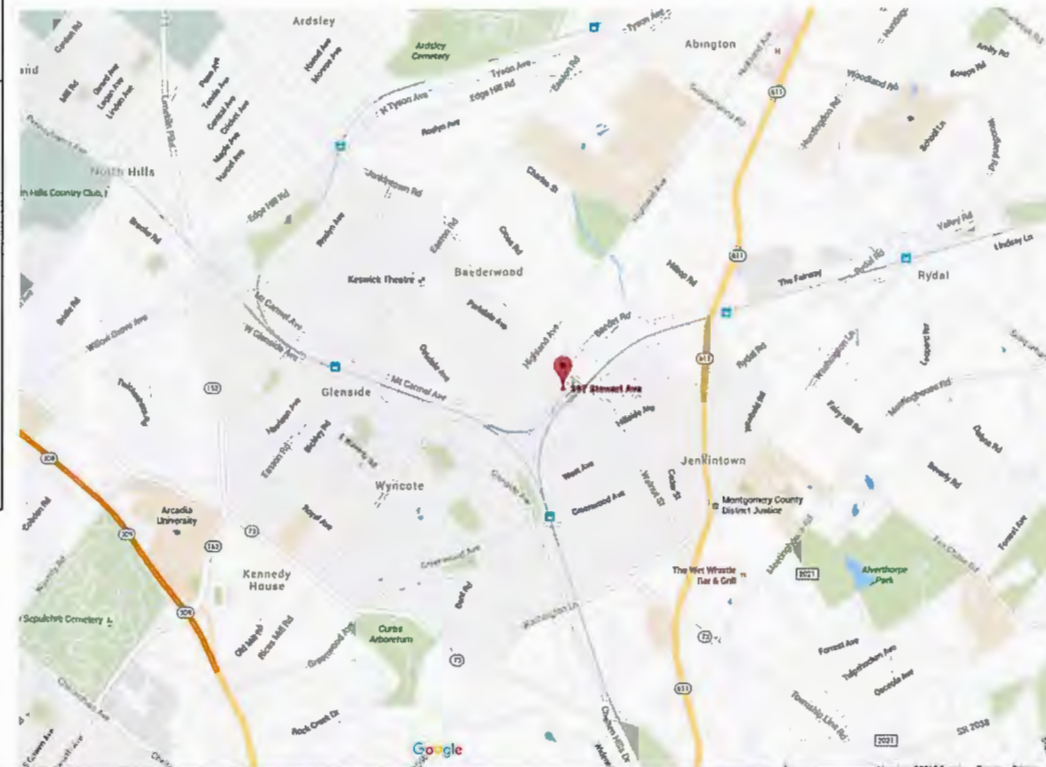
THE NEW SWITCHVILLE COMMONS RESIDENTIAL LIVING APARTMENTS

397 STEWART AVE.
JENKINTOWN, PA 19046

PRESENTATION DOCUMENTS

11/17/2015

LOCATION MAP



The Doylestown
Building Group



Design o Build o Create

6385 Sawmill Rd.
Pipersville, PA 18947
contact@thedoylestownbuildinggroup.com

DRAWING LIST

- C1: COVER SHEET
- SP1: SITE PLAN
- A1: EXISTING FIRST FLOOR PLAN
- A1.1: NEW FIRST FLOOR PLAN
- A2: EXISTING SECOND FLOOR PLAN
- A2.2: NEW SECOND FLOOR PLAN
- 3D: 3D PERSPECTIVES

Switchville Apartments

397 Stewart Rd
Abington, PA 19001

Revision

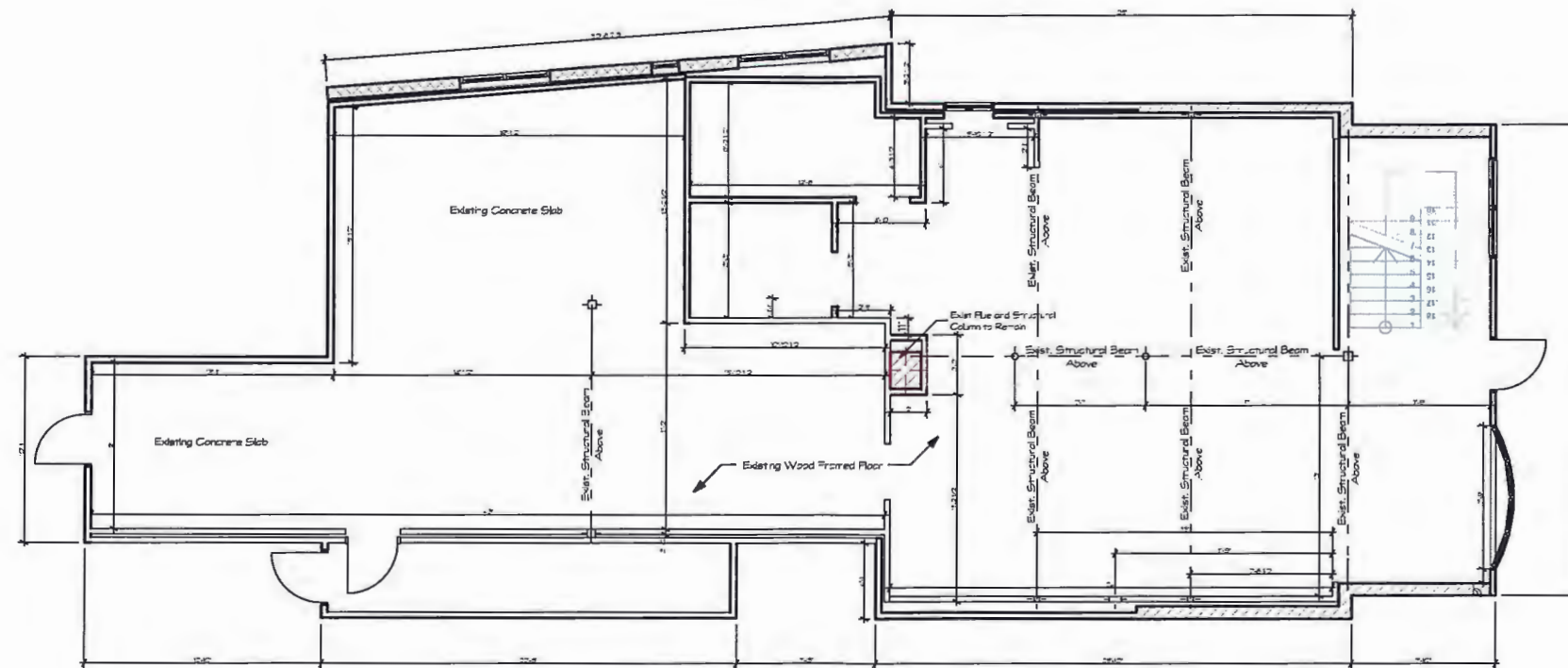
C1

The Doylestown
Building Group



Design o Build o Create

6385 Sawmill Rd.
Pipersville, PA 18947
contact@thedoylestownbuildinggroup.com



Existing First Floor Plan

1/8" = 1'-0"

Switchville Apartments

397 Stewart Rd
Abington, PA 19001

Revision

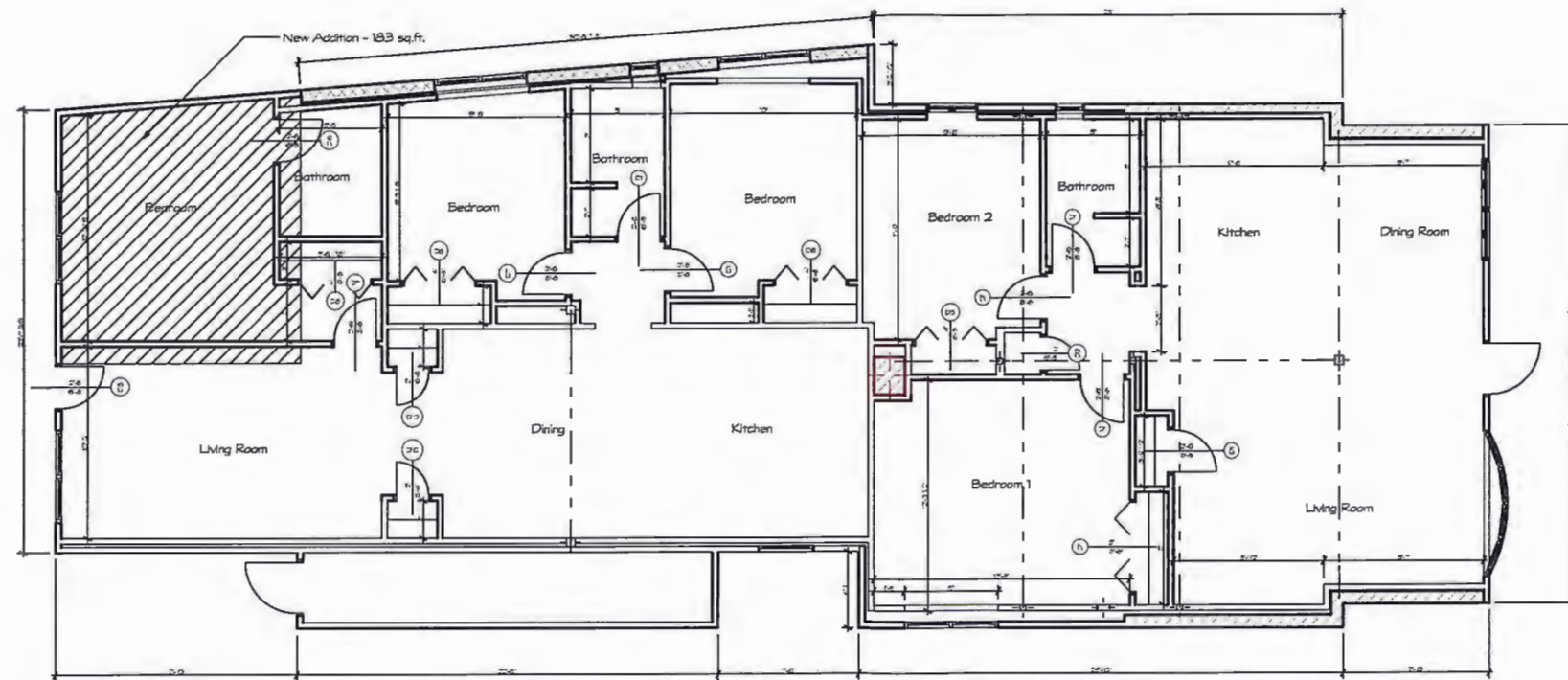
A1

The Doylestown
Building Group



Design o Build o Create

6385 Sawmill Rd.
Pipersville, PA 18947
contact@thedoylestownbuildinggroup.com



New First Floor Plan - Unit 1 and Unit 2

1/8" = 1'-0"

Switchville Apartments

397 Stewart Rd
Abington, PA 19001

Revision

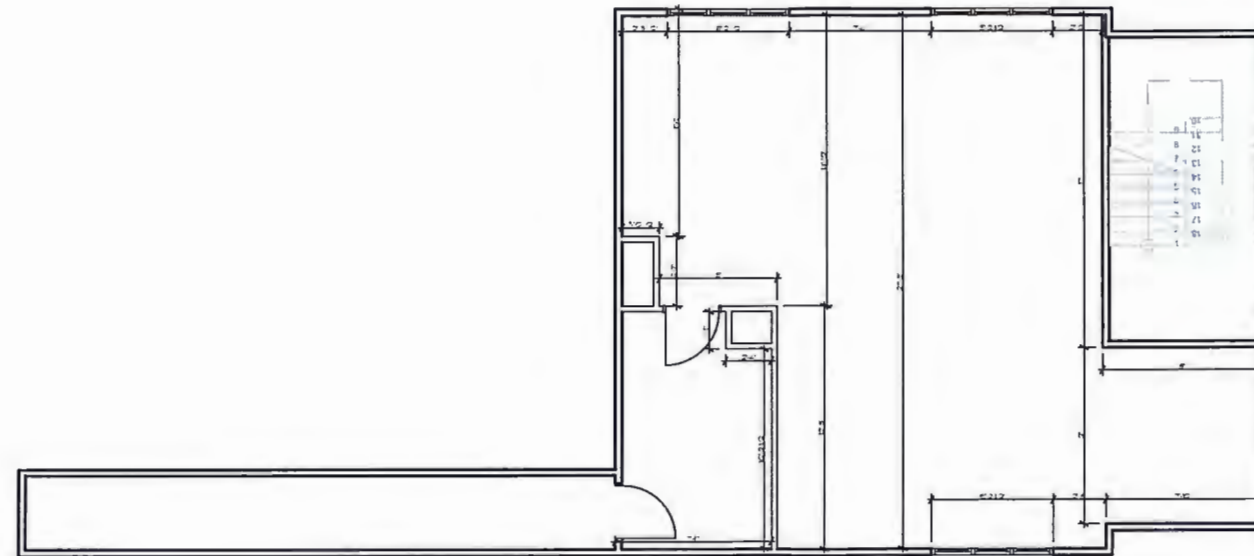
A1.1

The Doylestown
Building Group



Design o Build o Create

6385 Sawmill Rd.
Pipersville, PA 18947
contact@thedoylestownbuildinggroup.com



Exist. Second Floor Plan

1/8" = 1'-0"

Switchville Apartments

397 Stewart Rd
Abington, PA 19001

Revision

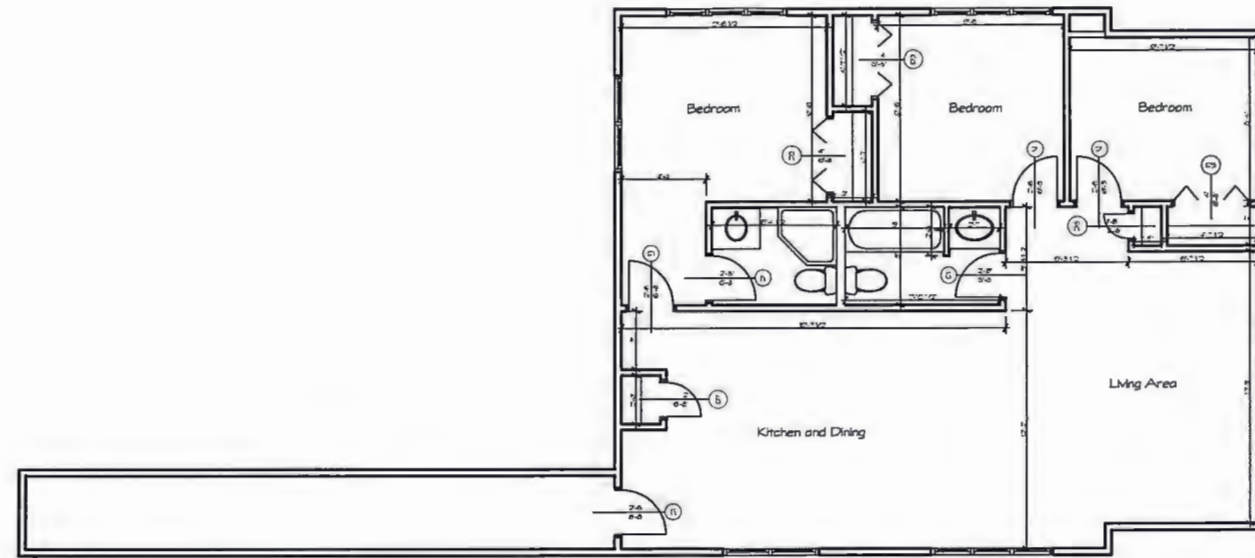
A2

The Doylestown
Building Group



Design o Build o Create

6385 Sawmill Rd.
Pipersville, PA 18947
contact@thedoylestownbuildinggroup.com



New Second Floor Plan - Unit 3

1/8" = 1'-0"

Switchville Apartments

397 Stewart Rd
Abington, PA 19001

Revision

A2.1



The Doylestown
Building Group



Design o Build o Create

6385 Sawmill Rd.
Pipersville, PA 18947
contact@thedoylestownbuildinggroup.com

Switchville Apartments

397 Stewart Rd
Abington, PA 19001

Revision

3D